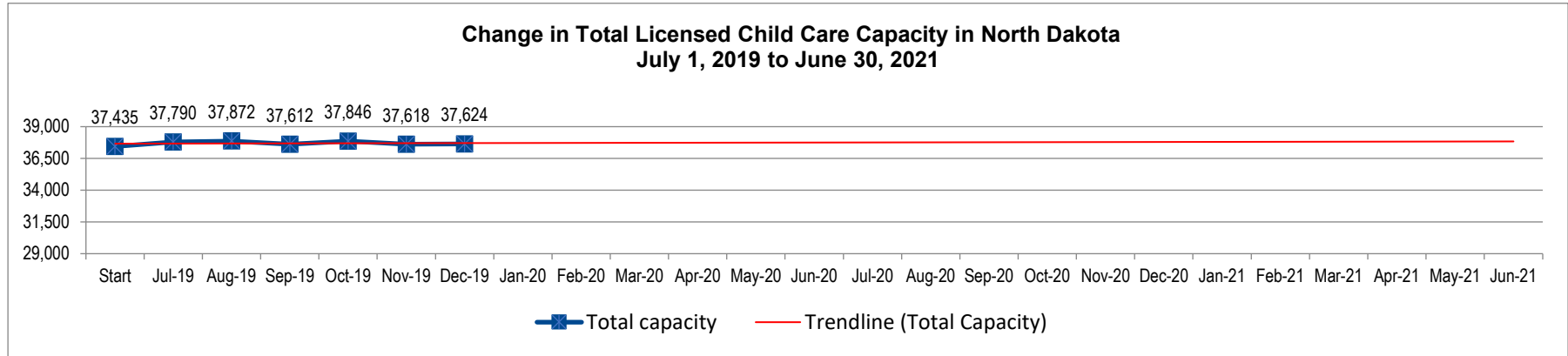


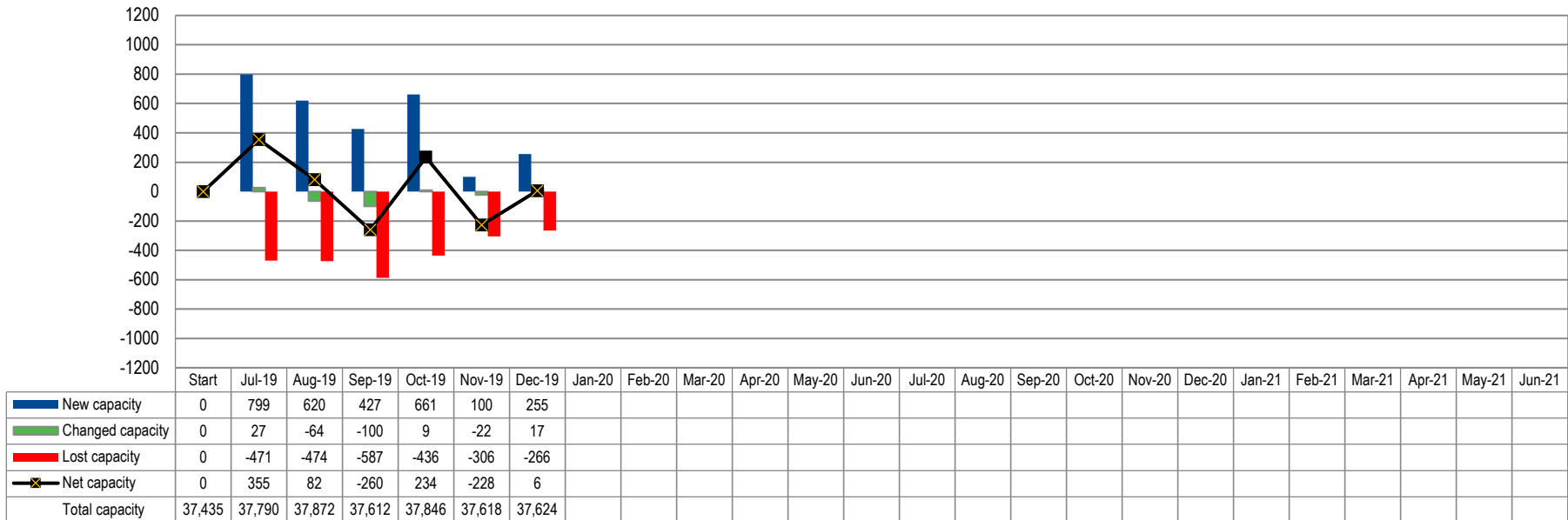
# North Dakota Licensed Child Care Capacity Snapshot

as of December 31, 2019



The following chart depicts newly licensed capacity per month, as well as capacity changes within existing licensed programs, and how much capacity was lost due to programs closing. The sum of those totals equals the net capacity for each month.

**Change in Licensed Child Care Capacity in North Dakota  
July 1, 2019 to June 30, 2021**



The chart on the following page documents the potential need for child care in each county, the current capacity of licensed child care, and the % to which that child care supply meets the potential demand. The Capacity Goals columns (yellow) indicate how many new spots would be needed to meet 30%, 40%, or 50% of potential demand.



# North Dakota Licensed Child Care Capacity Snapshot

	July, 2019				December, 2019		Capacity Goals		
	Children Ages 0 to 5 potentially needing child care (NDKC)	Children Ages 6 to 13 potentially needing child care (NDKC)	Capacity of licensed child care (CCA)	Extent licensed care meets potential demand	Net Change in licensed capacity since 7/1/19	Current extent licensed care meets potential demand	Additional capacity needed to meet 30% of demand	Additional capacity needed to meet 40% of demand	Additional capacity needed to meet 50% of demand
<b>North Dakota</b>	<b>39,844</b>	<b>53,576</b>	<b>37,435</b>	<b>40.1%</b>	<b>189</b>	40.3%	-	-	<b>9,086</b>
Adams	94	150	124	50.7%	-20	42.6%	-	-	18
Barnes	531	855	540	39.0%	-27	37.0%	-	41	180
Benson	353	590	42	4.5%	35	8.2%	206	300	394
Billings	68	42	63	57.3%	-6	51.8%	-	-	-
Bottineau	259	389	307	47.4%	32	52.3%	-	-	-
Bowman	239	311	194	35.3%	-35	28.9%	6	61	116
Burke	82	169	123	49.0%	-8	45.8%	-	-	10
Burleigh	5,334	7,194	4590	36.6%	-183	35.2%	-	604	1,857
Cass	10,737	12,159	14399	62.9%	-19	62.8%	-	-	-
Cavalier	180	234	165	39.9%	0	39.9%	-	1	42
Dickey	310	484	318	40.0%	-47	34.1%	-	47	126
Divide	117	119	114	48.2%	9	52.1%	-	-	-
Dunn	213	287	53	10.6%	0	10.6%	97	147	197
Eddy	166	202	81	22.0%	-9	19.6%	38	75	112
Emmons	118	250	121	32.9%	18	37.8%	-	8	45
Foster	162	279	139	31.5%	0	31.5%	-	38	82
Golden Valley	98	165	102	38.7%	0	38.7%	-	3	30
Grand Forks	3,458	4,536	3428	42.9%	206	45.5%	-	-	363
Grant	103	147	48	19.2%	39	34.8%	-	13	38
Griggs	136	160	91	30.7%	0	30.7%	-	27	57
Hettinger	113	184	119	40.1%	-11	36.4%	-	11	40
Kidder	97	144	39	16.2%	0	16.2%	33	57	81
Lamoure	182	331	156	30.4%	3	31.0%	-	46	98
Logan	80	151	109	47.2%	30	60.2%	-	-	-
McHenry	262	417	281	41.4%	-21	38.3%	-	12	79
McIntosh	143	195	118	35.0%	-8	32.6%	-	25	59
McKenzie	494	808	266	20.4%	74	26.1%	51	181	311
McLean	380	650	249	24.2%	-34	20.9%	94	197	300
Mercer	398	600	261	26.1%	8	26.9%	31	130	230
Morton	1,965	2,173	1000	24.2%	-9	23.9%	251	664	1,078
Mountrail	453	810	228	18.1%	-13	17.0%	164	290	416
Nelson	136	177	141	45.1%	0	45.1%	-	-	15
Oliver	82	90	37	21.5%	0	21.5%	15	32	49
Pembina	307	536	202	23.9%	-11	22.6%	62	146	231
Pierce	208	332	115	21.3%	47	30.0%	-	54	108
Ramsey	617	1,038	1001	60.5%	29	62.2%	-	-	-
Ransom	268	447	249	34.8%	-39	29.4%	5	76	148
Renville	137	212	27	7.7%	20	13.5%	58	93	127
Richland	741	1,225	925	47.0%	-47	44.7%	-	-	105
Rolette	714	1,108	214	11.7%	4	12.0%	329	511	693
Sargent	156	311	138	29.5%	37	37.4%	-	12	59
Sheridan	26	53	17	21.5%	0	21.5%	7	15	23
Sioux	262	429	0	0.0%	0	0.0%	207	277	346
Slope	48	25	0	0.0%	0	0.0%	22	29	37
Stark	1,505	2,166	960	26.1%	100	28.9%	41	409	776
Steele	79	111	66	34.7%	0	34.7%	-	10	29
Stutsman	1,085	1,464	960	37.7%	33	39.0%	-	27	282
Towner	92	142	44	18.8%	0	18.8%	26	50	73
Traill	475	581	497	47.1%	-4	46.7%	-	-	35
Walsh	505	779	411	32.0%	-8	31.4%	-	111	239
Ward	3,751	5,146	2,426	27.3%	22	27.5%	221	1,111	2,000
Wells	134	226	175	48.6%	-2	48.1%	-	-	7
Williams	1,191	1,789	962	32.3%	4	32.4%	-	226	524