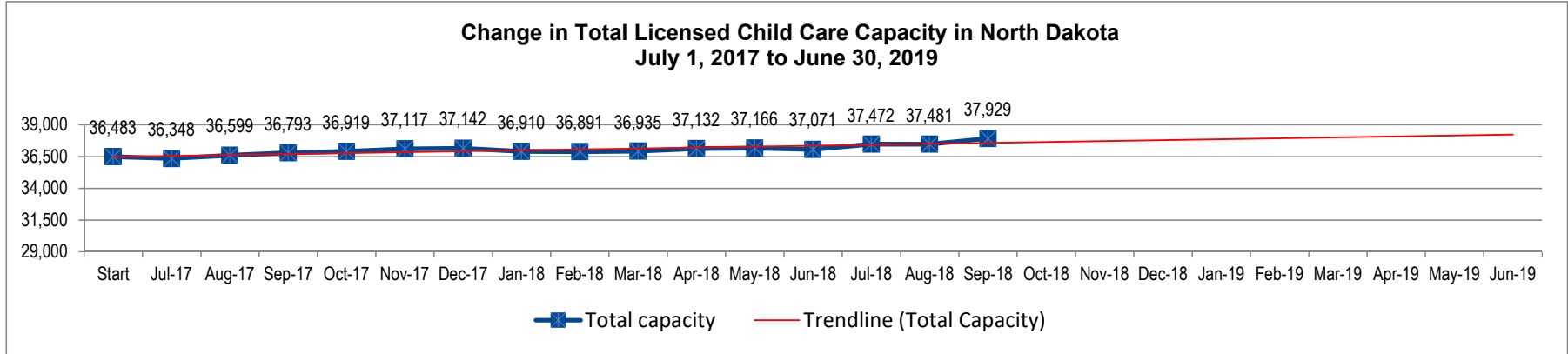


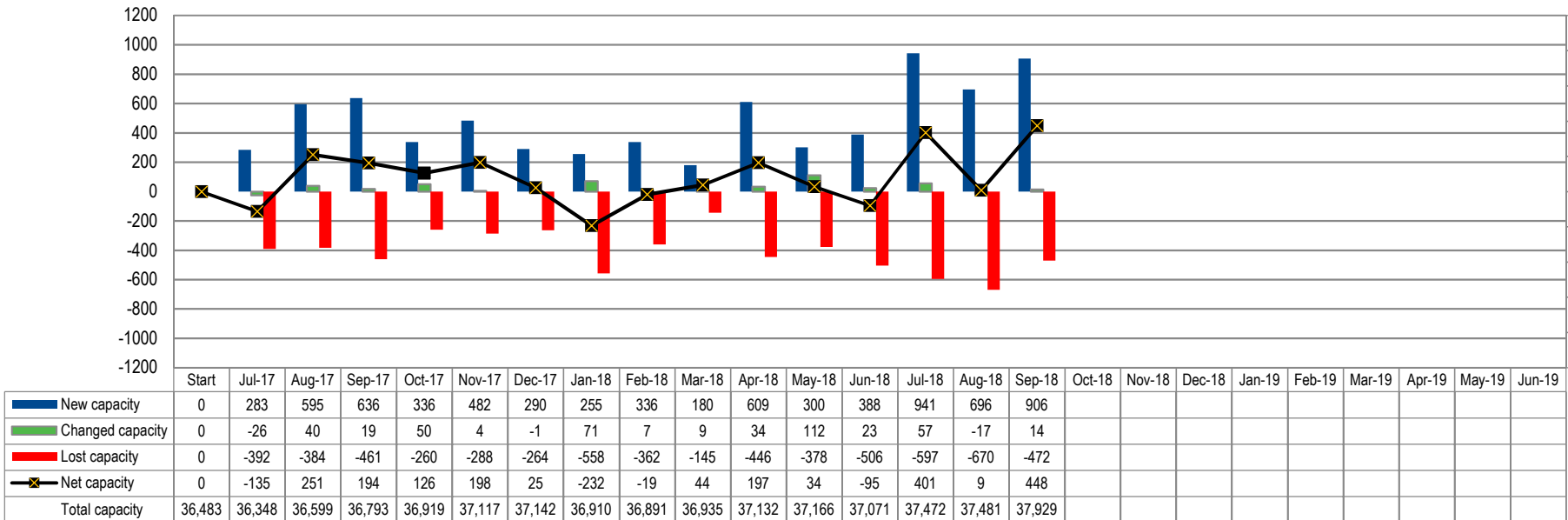
North Dakota Licensed Child Care Capacity Snapshot

as of September 30, 2018



The following chart depicts newly licensed capacity per month, as well as capacity changes within existing licensed programs, and how much capacity was lost due to programs closing. The sum of those totals equals the net capacity for each month.

**Change in Licensed Child Care Capacity in North Dakota
July 1, 2017 to June 30, 2019**



The chart on the following page documents the potential need for child care in each county, the current capacity of licensed child care, and the % to which that child care supply meets the potential demand. The Capacity Goals columns (yellow) indicate how many new spots would be needed to meet 30%, 40%, or 50% of potential demand.

North Dakota Licensed Child Care Capacity Snapshot

	July, 2017				September, 2018		Capacity Goals		
	Children Ages 0 to 5 potentially needing child care (NDKC)	Children Ages 6 to 13 potentially needing child care (NDKC)	Capacity of licensed child care (CCA)	Extent licensed care meets potential demand	Net Change in licensed capacity since 7/1/17	Current extent licensed care meets potential demand	Additional capacity needed to meet 30% of demand	Additional capacity needed to meet 40% of demand	Additional capacity needed to meet 50% of demand
North Dakota	39,844	53,576	36,483	39.1%	1,446	40.6%	-	-	8,781
Adams	94	150	112	45.8%	21	54.4%	-	-	-
Barnes	531	855	535	38.6%	14	39.6%	-	5	144
Benson	353	590	57	6.0%	-18	4.1%	244	338	432
Billings	68	42	15	13.6%	18	30.0%	-	11	22
Bottineau	259	389	298	46.0%	21	49.2%	-	-	5
Bowman	239	311	148	26.9%	16	29.8%	1	56	111
Burke	82	169	81	32.3%	42	49.0%	-	-	2
Burleigh	5,334	7,194	4469	35.7%	64	36.2%	-	478	1,731
Cass	10,737	12,159	14273	62.3%	454	64.3%	-	-	-
Cavalier	180	234	151	36.5%	21	41.6%	-	-	35
Dickey	310	484	312	39.3%	21	41.9%	-	-	64
Divide	117	119	66	27.9%	69	57.1%	-	-	-
Dunn	213	287	60	12.0%	0	12.0%	90	140	190
Eddy	166	202	78	21.2%	-7	19.3%	39	76	113
Emmons	118	250	111	30.2%	7	32.1%	-	29	66
Foster	162	279	101	22.9%	9	24.9%	22	67	111
Golden Valley	98	165	102	38.7%	0	38.7%	-	3	30
Grand Forks	3,458	4,536	3267	40.9%	159	42.9%	-	-	571
Grant	103	147	66	26.4%	-18	19.2%	27	52	77
Griggs	136	160	91	30.7%	-9	27.7%	7	36	66
Hettinger	113	184	115	38.7%	-9	35.7%	-	13	42
Kidder	97	144	48	20.0%	9	23.7%	15	39	63
Lamoure	182	331	169	32.9%	-22	28.6%	7	58	110
Logan	80	151	107	46.3%	11	51.1%	-	-	(2)
McHenry	262	417	181	26.7%	25	30.3%	-	66	133
McIntosh	143	195	148	43.8%	0	43.8%	-	-	21
McKenzie	494	808	255	19.6%	4	19.9%	132	262	392
McLean	380	650	275	26.7%	-1	26.6%	35	138	241
Mercer	398	600	290	29.0%	-30	26.0%	40	139	239
Morton	1,965	2,173	1017	24.6%	235	30.3%	-	403	817
Mountrail	453	810	159	12.6%	98	20.3%	122	248	374
Nelson	136	177	141	45.1%	0	45.1%	-	-	15
Oliver	82	90	22	12.8%	15	21.5%	15	32	49
Pembina	307	536	243	28.8%	31	32.5%	-	63	148
Pierce	208	332	115	21.3%	0	21.3%	47	101	155
Ramsey	617	1,038	892	53.9%	127	61.6%	-	-	-
Ransom	268	447	229	32.0%	17	34.4%	-	40	112
Renville	137	212	62	17.8%	-25	10.6%	68	103	137
Richland	741	1,225	990	50.3%	-54	47.6%	-	-	47
Rolette	714	1,108	160	8.8%	-4	8.6%	391	573	755
Sargent	156	311	158	33.8%	-18	29.9%	-	47	94
Sheridan	26	53	17	21.5%	0	21.5%	7	15	23
Sioux	262	429	0	0.0%	0	0.0%	207	277	346
Slope	48	25	0	0.0%	0	0.0%	22	29	37
Stark	1,505	2,166	938	25.5%	-20	25.0%	183	551	918
Steele	79	111	59	31.0%	7	34.7%	-	10	29
Stutsman	1,085	1,464	942	37.0%	59	39.3%	-	19	274
Towner	92	142	44	18.8%	0	18.8%	26	50	73
Traill	475	581	531	50.3%	-28	47.6%	-	-	25
Walsh	505	779	414	32.2%	8	32.9%	-	92	220
Ward	3,751	5,146	2,295	25.8%	55	26.4%	319	1,209	2,098
Wells	134	226	124	34.5%	51	48.6%	-	-	5
Williams	1,191	1,789	950	31.9%	21	32.6%	-	221	519