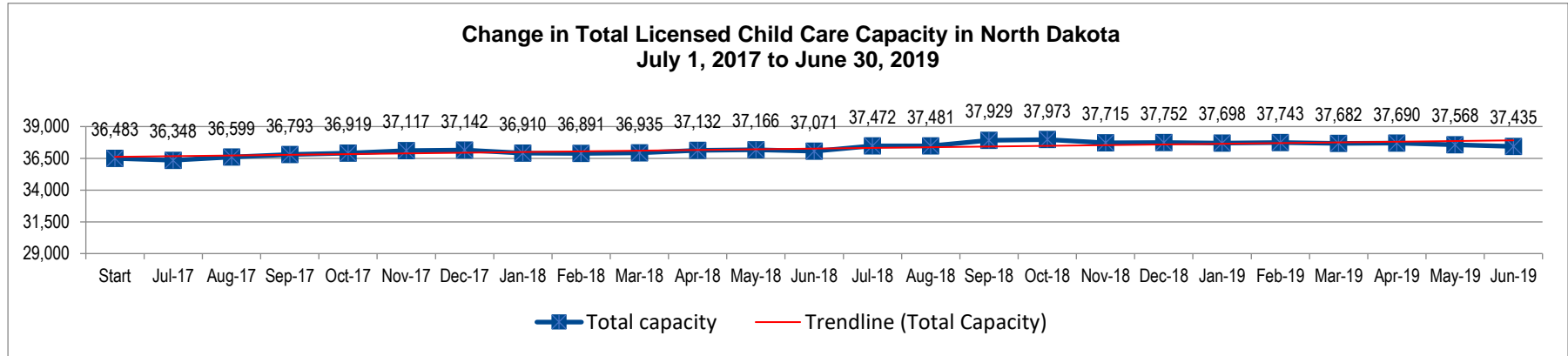


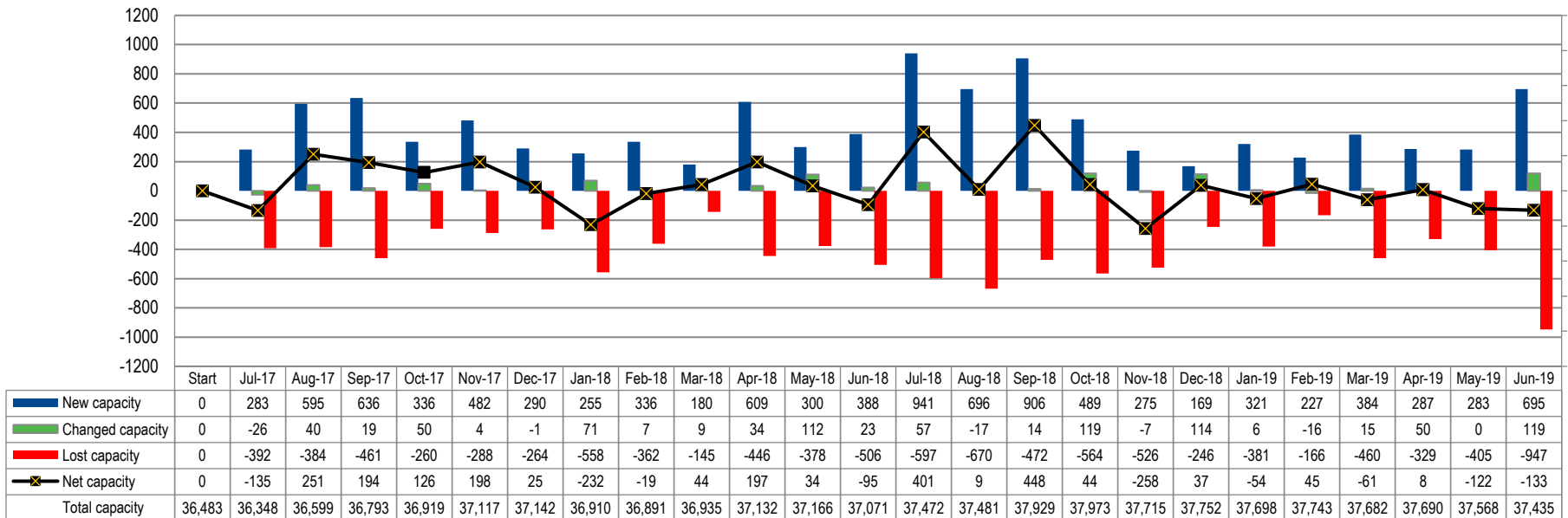
North Dakota Licensed Child Care Capacity Snapshot

as of June 30, 2019



The following chart depicts newly licensed capacity per month, as well as capacity changes within existing licensed programs, and how much capacity was lost due to programs closing. The sum of those totals equals the net capacity for each month.

**Change in Licensed Child Care Capacity in North Dakota
July 1, 2017 to June 30, 2019**



The chart on the following page documents the potential need for child care in each county, the current capacity of licensed child care, and the % to which that child care supply meets the potential demand. The Capacity Goals columns (yellow) indicate how many new spots would be needed to meet 30%, 40%, or 50% of potential demand.

North Dakota Licensed Child Care Capacity Snapshot

	July, 2017				June, 2019		Capacity Goals		
	Children Ages 0 to 5 potentially needing child care (NDKC)	Children Ages 6 to 13 potentially needing child care (NDKC)	Capacity of licensed child care (CCA)	Extent licensed care meets potential demand	Net Change in licensed capacity since 7/1/17	Current extent licensed care meets potential demand	Additional capacity needed to meet 30% of demand	Additional capacity needed to meet 40% of demand	Additional capacity needed to meet 50% of demand
North Dakota	39,844	53,576	36,483	39.1%	952	40.1%	-	-	9,275
Adams	94	150	112	45.8%	12	50.7%	-	-	-
Barnes	531	855	535	38.6%	5	39.0%	-	14	153
Benson	353	590	57	6.0%	-15	4.5%	241	335	429
Billings	68	42	15	13.6%	48	57.3%	-	-	-
Bottineau	259	389	298	46.0%	9	47.4%	-	-	17
Bowman	239	311	148	26.9%	46	35.3%	-	26	81
Burke	82	169	81	32.3%	42	49.0%	-	-	2
Burleigh	5,334	7,194	4469	35.7%	121	36.6%	-	421	1,674
Cass	10,737	12,159	14273	62.3%	126	62.9%	-	-	-
Cavalier	180	234	151	36.5%	14	39.9%	-	1	42
Dickey	310	484	312	39.3%	6	40.0%	-	-	79
Divide	117	119	66	27.9%	48	48.2%	-	-	4
Dunn	213	287	60	12.0%	-7	10.6%	97	147	197
Eddy	166	202	78	21.2%	3	22.0%	29	66	103
Emmons	118	250	111	30.2%	10	32.9%	-	26	63
Foster	162	279	101	22.9%	38	31.5%	-	38	82
Golden Valley	98	165	102	38.7%	0	38.7%	-	3	30
Grand Forks	3,458	4,536	3267	40.9%	161	42.9%	-	-	569
Grant	103	147	66	26.4%	-18	19.2%	27	52	77
Griggs	136	160	91	30.7%	0	30.7%	-	27	57
Hettinger	113	184	115	38.7%	4	40.1%	-	-	29
Kidder	97	144	48	20.0%	-9	16.2%	33	57	81
Lamoure	182	331	169	32.9%	-13	30.4%	-	49	101
Logan	80	151	107	46.3%	2	47.2%	-	-	7
McHenry	262	417	181	26.7%	100	41.4%	-	-	58
McIntosh	143	195	148	43.8%	-30	35.0%	-	17	51
McKenzie	494	808	255	19.6%	11	20.4%	125	255	385
McLean	380	650	275	26.7%	-26	24.2%	60	163	266
Mercer	398	600	290	29.0%	-29	26.1%	39	138	238
Morton	1,965	2,173	1017	24.6%	-17	24.2%	242	655	1,069
Mountrail	453	810	159	12.6%	69	18.1%	151	277	403
Nelson	136	177	141	45.1%	0	45.1%	-	-	15
Oliver	82	90	22	12.8%	15	21.5%	15	32	49
Pembina	307	536	243	28.8%	-41	23.9%	51	135	220
Pierce	208	332	115	21.3%	0	21.3%	47	101	155
Ramsey	617	1,038	892	53.9%	109	60.5%	-	-	-
Ransom	268	447	229	32.0%	20	34.8%	-	37	109
Renville	137	212	62	17.8%	-35	7.7%	78	113	147
Richland	741	1,225	990	50.3%	-65	47.0%	-	-	58
Rolette	714	1,108	160	8.8%	54	11.7%	333	515	697
Sargent	156	311	158	33.8%	-20	29.5%	2	49	96
Sheridan	26	53	17	21.5%	0	21.5%	7	15	23
Sioux	262	429	0	0.0%	0	0.0%	207	277	346
Slope	48	25	0	0.0%	0	0.0%	22	29	37
Stark	1,505	2,166	938	25.5%	22	26.1%	141	509	876
Steele	79	111	59	31.0%	7	34.7%	-	10	29
Stutsman	1,085	1,464	942	37.0%	18	37.7%	-	60	315
Towner	92	142	44	18.8%	0	18.8%	26	50	73
Traill	475	581	531	50.3%	-34	47.1%	-	-	31
Walsh	505	779	414	32.2%	-3	32.0%	-	103	231
Ward	3,751	5,146	2,295	25.8%	131	27.3%	243	1,133	2,022
Wells	134	226	124	34.5%	51	48.6%	-	-	5
Williams	1,191	1,789	950	31.9%	12	32.3%	-	230	528